

The background features a stylized illustration of a hand holding a scale of justice. The hand is rendered in shades of red and orange, with fingers spread. The scale is a simple silhouette in a lighter orange color. The background is composed of various geometric shapes in shades of yellow and orange, creating a layered, abstract effect. A solid black shape is located in the bottom right corner.

Be the Justice

Manipal Law
School
(MLS B'LRU)

EXPLORE LEGAL EDUCATION

Manipal Law School envisions nurturing new age, future ready legal professionals adept at technology laws and alternative dispute resolution who will contribute to moulding the socio-legal framework nationally and internationally.

#YouBelongHere



MANIPAL
ACADEMY of HIGHER EDUCATION
BENGALURU CAMPUS
(Institution of Eminence Deemed to be University)

INSTITUTION OF
EMINENCE



nirf #4



Raise The Bar

Manipal Law School, Bengaluru is redefining legal education for the new age. With a focus on innovation, technology, and emerging legal areas, it nurtures socially conscious advocates and future-ready, adaptive legal professionals. Students develop expertise in essential legal tools to excel in a technology-driven, interconnected global society. The School curates niche electives for higher classes and facilitates immersing students in a truly international learning environment.

MAHE B'LRU

PROGRAMMES AT A GLANCE

MLS offers three undergraduate and three niche postgraduate programmes, a diploma programme in blended mode and a doctoral programme.

UG Degree Programmes

BA LLB (Hons)
BBA LLB (Hons)
LLB (Hons)

PG Degree Programmes

LLM in Data Privacy and Information
Technology Laws
LLM in International Investment and
Commercial Arbitration
LLM in Construction Law and Arbitration

Distance Diploma Programme

PG Diploma in Construction Law and
Arbitration (blended mode)

Doctoral Programme

Explore Innovative Learning models

Industry interface

Workshops and Guest
Lectures

Research projects

Experiential learning

One to three months
long immersive learning
- Internships

Moot Court

Legal Aid Clinic

Flipped Classroom

CHAMPION JUSTICE, SHAPE TOMORROW

At MLS, we chart a transformative curriculum in legal education designed to shape future-ready lawyers adept in national and international legal frameworks. The LLB programmes are designed and delivered to provide foundational legal knowledge, enriched by an interdisciplinary approach that integrates humanities, commerce, and emerging fields. Our LLM curriculum blends cutting-edge specialisations in technology laws, construction laws and Alternative Dispute Resolution to address the demands of a globalised world. With a strong emphasis on advocacy skills, our mooting, drafting, and policymaking modules equip students to excel as advocates, corporate lawyers, researchers, policymakers, and academicians, preparing them for impactful careers in an evolving world.



WHY CHOOSE US

Dive into the depths of law, challenge your assumptions and discover who you truly are!

MLS is strategically located in the multidisciplinary MAHE campus, Bengaluru. The campus is a haven for students who want to explore interdisciplinary learning/ industry focused research.

MLS has an esteemed group of academicians, educated from the best schools in India and abroad including prestigious national and international schools like the National Law School, Bangalore, NALSAR, IIT, University of Sydney, Australia, who continue to sharpen their legal acumen through fellowships and dedicated research.

MLS offers structured internship opportunities each semester as part of the immersive, practice-oriented education. This enables students to explore the professional space and gain an edge in the job market.



Law programmes suited for emerging industry needs.



Technology focused law programmes for new age lawyers.



Industry interface lectures.



Training programmes - campus to corporate training.



International exposure through in-house faculty & guest faculty.



1 to 3 months Internship.



Moot court society.



Legal Aid Clinic.



Mentoring program.



ASSESSMENT AND EXAMINATION



Key Open Book Exams

Problem Based Questions

Research Based Take Home Exams

Paperless, E-pad Exams

STUDENT CLUBS AT MLS B'LRU



Moot Court Society

Moot Court simulations offers an immersive legal learning experience. The student-driven Moot Court Society organizes in-house activities and represents the School at national and international events under faculty guidance.



Legal Service Clinic

The Legal Service Clinic raises awareness about socio-legal issues and offers pro bono legal services. Aggrieved parties can seek advice from the MLS legal team under the guidance of expert legal educators and practitioners.



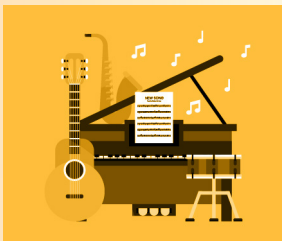
Debating Society

The Debating Society at our law school provides a dynamic platform to enhance speaking and listening skills, engage in discussions on current affairs, and foster advocacy through MUN and thought-provoking debates.



Social Media Club

The Social Media Club empowers students to develop essential digital communication skills, actively engage with legal discourse online, and foster greater awareness of pressing legal issues through various platforms.



Cultural Club

The Cultural Club promotes holistic development by balancing intellectual engagement with emotional expression. It is a platform for students to celebrate and engage in diverse cultural experiences.



Sports Club

The Sports Club provides students with equal opportunities to showcase their skills and excel in activities that can foster teamwork, discipline, physical fitness and overall well-being beyond the classroom.



Environment Club

The Environment Club promotes harmony between nature and development, rejuvenates campus flora, and inspires sustainable advocacy, partnering with MAHE Bengaluru's Rewilding Task Force.



THRIVE IN A NEXT GEN CAMPUS

Infrastructure at MLS B'LRU

MLS houses an expansive library with an extensive collection of legal texts, international journals, and advanced digital resources that enable students to learn from anywhere on campus. The up-to-date library encourages self-paced and research-led education, which is at the heart of MLS vision.

The fully equipped moot court hall provides an immersive, practice-oriented learning environment, preparing students for real-world legal challenges.

MLS has ICT enabled, temperature controlled, flexi classrooms that provide a dynamic learning experience.

“

Having academic rigour doesn't mean we have to stress students.

Dr. Sarasu Esther Thomas
Director, Manipal Law School

”





The Manipal Academy of Higher Education, Bengaluru (MAHE B'LRU), is a vast and open flagship campus of MAHE (Institution of Eminence) in vibrant Bengaluru!

At MAHE B'LRU we transcend boundaries through experiential learning, embracing global perspectives, and championing sustainability. Our world-class campus is a testament to our commitment to fostering unique future-ready education experiences across disciplines.

We are redefining the learning continuum, by blending traditional and new learning practices, deep research, plus focus on innovation, leadership, and entrepreneurship. To equip the next generation of leaders with the mindset and tools to navigate and make a positive difference in this ever-changing world.



SCAN & APPLY

+91 74117 47070 / + 91 98808 39581
+91 93152 02230 / 080 24494100

admissions.maheblr@manipal.edu



Undergraduate Programmes



BA LLB (Hons)

ELIGIBILITY

12th pass with 50%

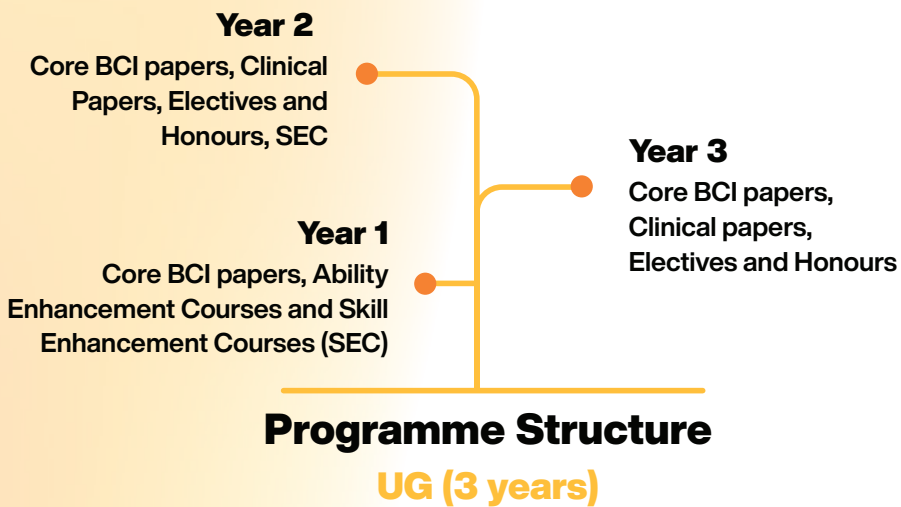
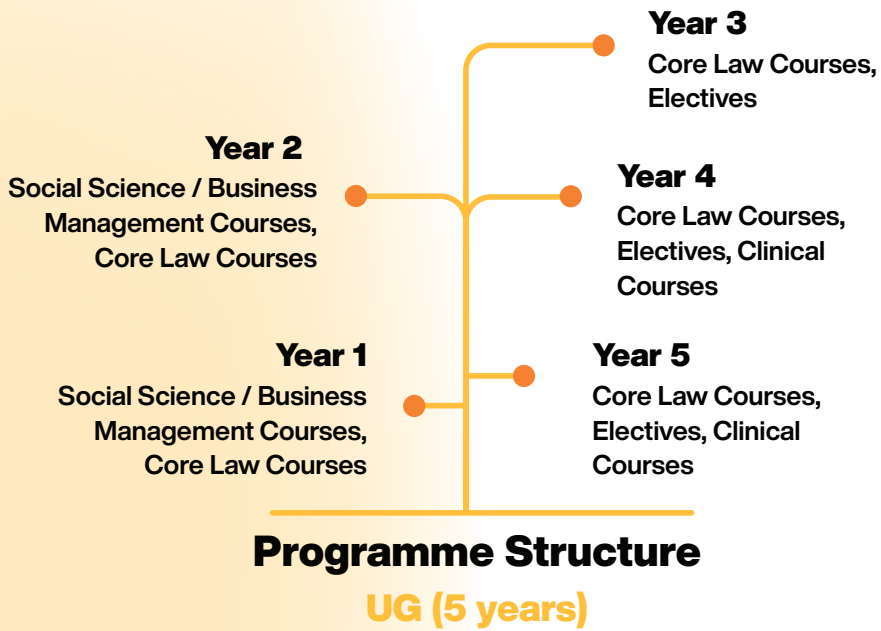
BBA LLB (Hons)

The basic eligibility for BA LLB (Hons) & BBA LLB (Hons) is passing the 12th grade or Std. XII at the HSC/ISC/CBSE/State Boards/NIOS in any stream (Humanities, Arts, Social Sciences, Commerce, Sciences & management) with a minimum of 50% score from any recognized Board in India.

LLB (Hons)

The basic eligibility for LLB (Hons.) is an applicant who has graduated with 50% in any discipline of knowledge from a University established by an Act of Parliament or by a State legislature or an equivalent national institution recognized as a Deemed-to-be-University or foreign University recognized as equivalent to the status of an Indian University by an authority competent to declare equivalence.

- Candidates taking the +2 examinations (Pre Degree/PUC) in March-May 2024 may apply with their class X and XI marks.
- Students pursuing International Curriculum (IB/IG) must note that eligibility is according to AIU stipulations.
- Applicants pursuing IB curriculum must have 3 HL and 3 SL with 24 credits.
- Applicants pursuing GCE / Edexcel must have a minimum of 3 A levels grade not less than C



Admission Process

- Apply online
- Personal Interview
- Admission formalities

Programme Fee (INR)

BBA LLB (Hons)

Duration : 5 Year
General Category - INR 3,30,000 per year
Caution deposit - INR 10,000

BA LLB (Hons)

Duration : 5 Year
General Category - INR 3,30,000 per year
Caution deposit - INR 10,000

LLB (Hons)

Duration : 3 Year
General Category - INR 1,58,000 per year
Caution deposit - INR 10,000



Postgraduate Programmes



LLM in Data Privacy and Information Technology Laws

ELIGIBILITY

LLB graduate with 50%

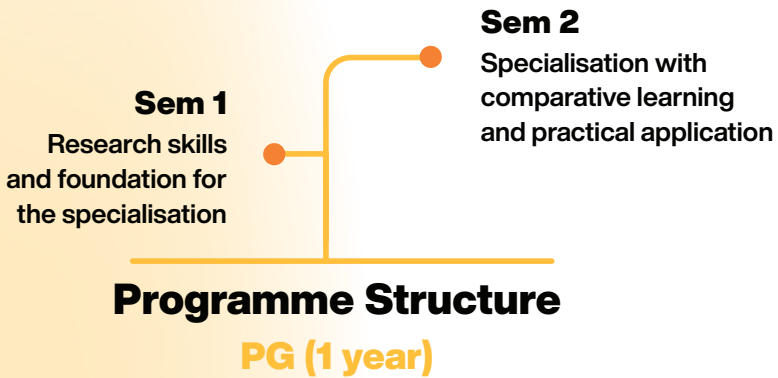
LLM International Investment and Commercial Arbitration

PG Diploma in Construction Law and Arbitration:

Pass in any UG degree from a recognized University, with minimum 50% aggregate marks, along with a minimum of 3 years of work experience after completion of UG.

LLM in Construction Law and Arbitration

PG Diploma in Construction Law and Arbitration (blended mode)



Admission Process

- Apply online
- Personal Interview
- Admission formalities

Programme Fee (INR)

LLM (All disciplines)

Duration : 1 Year

General Category - INR 2,31,000 per year

Caution deposit - INR 10,000

PG Diploma

Duration : 1 Year

General Category - INR 1,58,000 per year

Caution deposit - INR 10,000



Learn From The Best



Prof. Dr. Sarasu Esther Thomas
Professor and Director

Area of expertise: Gender, Human Rights, and Family Law.



Prof. Dr. Jaya Vasudevan
Professor of Law

Area of research: International Trade & Commercial Law, Technology Law & Taxation Law.



Prof. Dr. Ella Gorian
Professor

Area of interest: Artificial Intelligence, Data Protection, Cybersecurity, Human Rights and Public International Law.



Prof. Dr. Sunil John
Professor

Area of expertise: Legal History & Jurisprudence, International Law, Women's Studies.



Datuk Professor Sundra Rajoo Nadarajah
Honorary Professor of Law

Area of expertise: Construction Law and Arbitration.



Prof. R. Venkataraghavan
Professor of Practice

Area of expertise: Construction Law, Contract Lifecycle Management, Dispute Resolution, Expert (witness).



Prof. Dr. Anuja S
Associate Professor

Area of expertise: Human Rights Law with special emphasis on Industrial and Labour Laws, Constitutional Law, Civil Procedure Code, Administrative Law, ADR.



Dr. Indranil Saha
Associate Professor & Chairperson-IPR Cell
Area of research: Intellectual Property Rights, Technology Law, Cybersecurity and Data Protection, Finance and Corporate Laws



Dr. Rahul Mishra
Associate Professor
Area of expertise: International Health Law, International Trade Law, International Space Law.



Dr. Nagendra
Associate Professor
Area of expertise: Economics, Data Analysis, Business Analytics, Digital Analytics.



Dr. Rahul B N
Assistant Professor
Area of expertise: Sociology of Religion, Caste & Religion, Folk Religion.



Dr. Apoorvi Shrivastava
Associate Professor
Area of expertise: International Commercial Arbitration, Corporate Governance and Sustainability.



Dr. Sahana Reddy
Associate Professor
Area of research: Public International Law, Private International Law, Gender and Law, Cyber Laws, Data Protection Law, Privacy, Public Policy, Human Rights, International Law, Digital Rights, International Relations.



Dr. Neha Saxena
Assistant Professor (Senior Scale)
Area of research: Personal Law, Gender and Criminal Law.



Dr. Ali Faran Gulrez

Assistant Professor of Law

Area of expertise: International Law and Environmental Law.



Dr. Muhsin P P

Assistant Professor

Area of expertise: Public Diplomacy, Soft Power, International Political Communication.



Mr. Pavan V

Assistant Professor of Law

Area of research: Constitutional Law, Land Laws, Environmental Law, Right to Information.



Ms. Yashu Bansal

Assistant Professor

Area of research: Technology law and regulation, cyber laws, digital consumerism, personal data protection, AI laws.



Ms. Akshra Mehla

Assistant Professor of Law

Area of expertise: Jurisprudence, Gender and Law, Legal Pluralism.



Ms. Anuja Paul

Assistant Professor

Area of expertise: Securities Market and Financial Regulations.



Mr. Fagun Sahni

Assistant Professor of Law

Area of expertise: Public International Law, International Humanitarian Law, International Human Rights Law.



Ms. Neethu Mary Abraham

Assistant Professor Senior Scale

Area of expertise: Gender, Culture, Language.



www.manipal.edu/blr

Manipal Academy of Higher Education (MAHE)
(Institution of Eminence Deemed to be University)
Govindapura, Yelahanka, Bengaluru 560064,
Karnataka, India



mahe_bengaluru



mahebengaluru



mahe bengaluru



mahe_bengaluru



Manipal Academy of Higher Education, Bengaluru